

# CORIAN® SOLID SURFACE

The LA  
50 color portfolio



This Corian® Solid Surface paper palette is a flexible, handy and lightweight tool composed of high-definition printed paper samples which give a visual impression of what Corian® Solid Surface colors look like.

All printed colors were evaluated and compared to real Corian® Solid Surface samples under a 6000k lighting source.

This operation allowed the most accurate print match with the original material. The printed colors which present an accentuated metamerism, are mainly due to the mineral pigments contained in the inks.

Evaluation under different lighting conditions as well as differences in visual perception, could lead, for some colors, to appreciable differences between paper and material.

It is always advisable to evaluate the physical Corian® Solid Surface sample before making the final selection.

We invite you to visit [www.corian.com](http://www.corian.com), check our online color tool or ask your Corian® Solid Surface sales contact for more information.

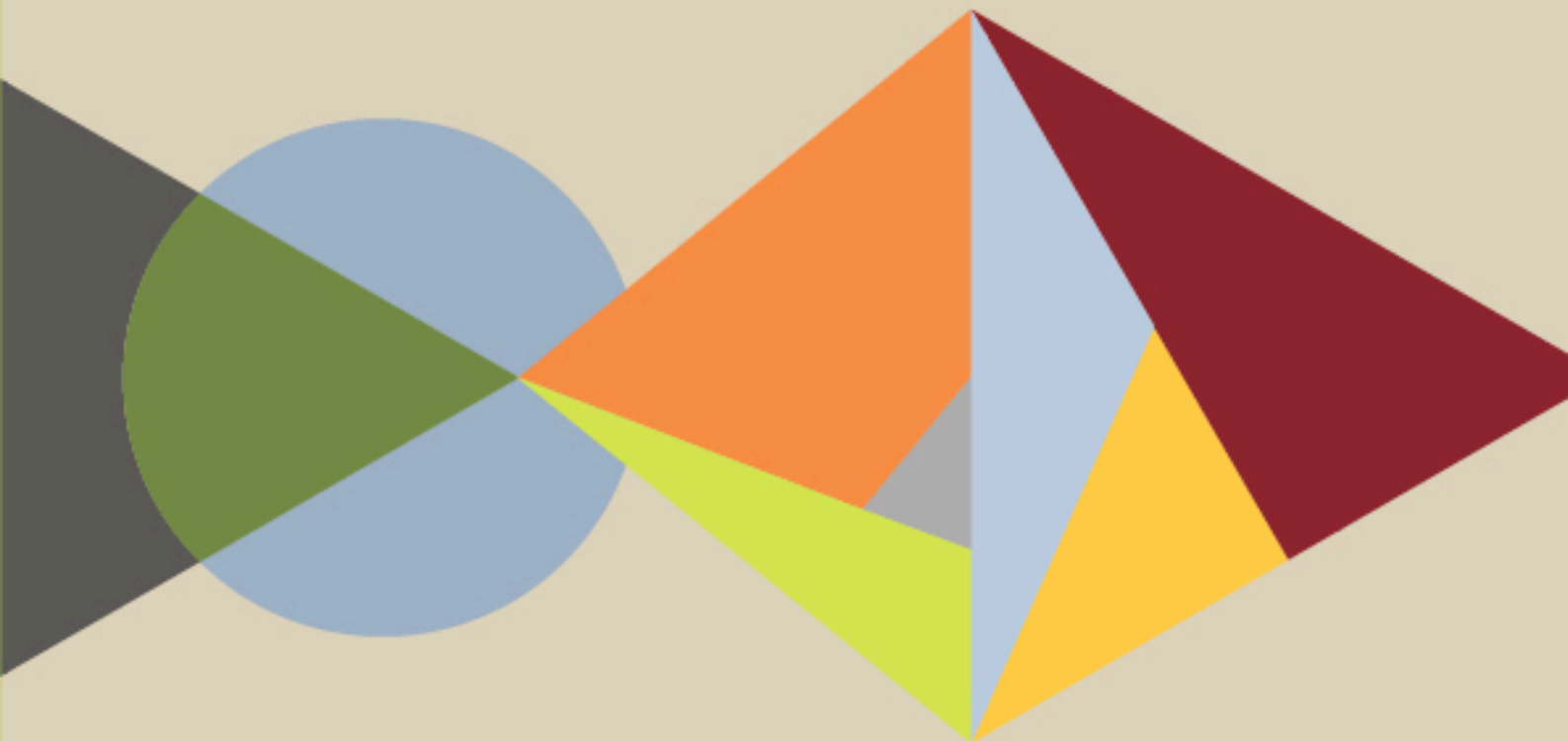


### Aesthetic Highlights

Corian® Solid Surface aesthetics include a variety of characteristics that deserve particular attention to achieve the best possible result for your project. The following list provides a description of aesthetic characteristics found on each of the following printed color pages for your reference. It is advisable to evaluate physical samples before making your final selection. For more information, visit [Corian.com](http://Corian.com) or consult with your Corian® sales contact.

- \* Contains random veins: veins may vary in intensity and highlight seams. Sample may not represent the full aesthetic.
- \* Contains random linear veins: veins may vary in intensity and highlight seams. Samples may not represent the full aesthetic.
- \* Translucent: substrate shadowing may appear. Ideal for backlit applications.
- \* Contains reflective pigments: may appear lighter or darker depending on viewing angle.
- \* Heavily pigmented: may require additional maintenance.
- \* Contains large, randomly distributed particles: sample may not represent the full aesthetic.
- \* Translucent, randomly veined: veins may vary in intensity and highlight seams. Substrate shadowing may appear. Sample may not represent the full aesthetic.
- \* Heavily pigmented and veined: veins may vary in intensity and highlight seams. May require additional maintenance. Sample may not represent the full aesthetic.
- \* Contains random veins and reflective pigments: veins may vary in intensity and highlight seams. May appear lighter or darker depending on viewing angle. Sample may not represent the full aesthetic.
- \* Heavily pigmented with reflective pigments: may appear lighter or darker depending on the viewing angle. May require additional maintenance.
- \* Heavily pigmented. Contains large, randomly distributed particles: heavily pigmented. May require additional maintenance. Contains large, randomly distributed particles. Sample may not represent the full aesthetic.
- \* Heavily pigmented with random veins and reflective pigments: veins may vary in intensity and highlight seams. May appear lighter or darker depending on the viewing angle. May require additional maintenance. Sample may not represent the full aesthetic.





DESIGNER WHITE

CORIAN® SOLID SURFACE

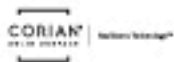


GLACIER WHITE

CORIAN® SOLID SURFACE



SUMMIT WHITE



GLACIER ICE

Translucent\*

CORIAN® SOLID SURFACE





CAMEO WHITE

CORIAN® SOLID SURFACE



VANILLA

CORIAN® SOLID SURFACE



ELEGANT GRAY

CORIAN® SOLID SURFACE

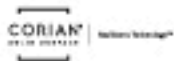


SILVER GRAY

CORIAN® SOLID SURFACE



STRATUS



IMPERIAL YELLOW

CORIAN® SOLID SURFACE



NEW

## BLOOMING GREEN

Heavily pigmented\*

CORIAN® SOLID SURFACE



CITRUS ORANGE

Heavily pigmented\*

CORIAN® SOLID SURFACE

www.corian.com





ROYAL RED

Heavily pigmented\*

CORIAN® SOLID SURFACE



NEW

LAGUNA

Heavily pigmented\*

CORIAN® SOLID SURFACE



DEEP ESPRESSO

Heavily pigmented\*

CORIAN® SOLID SURFACE



DEEP NOCTURNE

Heavily pigmented\*

CORIAN® SOLID SURFACE





NEW

## SPARKLING WHITE

Contains reflective pigments\*

CORIAN® SOLID SURFACE



ANTARCTICA

CORIAN® SOLID SURFACE



## WHITE ONYX

Translucent, randomly veined\*

CORIAN® SOLID SURFACE





## WHITE ONYX

Translucent, randomly veined\*

CORIAN® SOLID SURFACE

Visual representation of a corner joint



Large sample representation



## RICE PAPER

Contains large, randomly distributed particles\*

CORIAN® SOLID SURFACE



LINEN

CORIAN® SOLID SURFACE



GRAY ONYX

Translucent, randomly veined\*

CORIAN® SOLID SURFACE



## GRAY ONYX

Translucent, randomly veined\*

CORIAN® SOLID SURFACE

Visual representation of a corner joint



Larger sample representation



## SILVER LINEAR

Contains random linear veins\*

NEW

CORIAN® SOLID SURFACE



## SILVER LINEAR

Contains random linear veins\*

Visual representation of a corner joint



Large sample representation



SILVER BIRCH

CORIAN® SOLID SURFACE





RAIN CLOUD

Contains random veins\*

CORIAN® SOLID SURFACE



## RAIN CLOUD

Contains random veins\*

CORIAN® SOLID SURFACE

Visual representation of a corner joint



Large sample representation



NEW

## SEPIA LINEAR

Contains random linear veins\*

CORIAN® SOLID SURFACE



## SEPIA LINEAR

Contains random linear veins\*

Visual representation of a corner joint



Large sample representation



WHIPPED CREAM

Contains random veins\*

CORIAN® SOLID SURFACE



## WHIPPED CREAM

Contains random veins\*

CORIAN® SOLID SURFACE

Visual representation of a corner joint



Large sample representation



WITCH HAZEL

Contains random veins\*

CORIAN® SOLID SURFACE



## WITCH HAZEL

Contains random veins\*

CORIAN® SOLID SURFACE

Visual representation of a corner joint



Large sample representation





BEECH NUWOOD

Contains random veins\*

NEW

CORIAN® SOLID SURFACE



## BEECH NUWOOD

Contains random veins\*

Visual representation of a corner joint



Large sample representation



## CLAM SHELL

Contains random veins\*

CORIAN® SOLID SURFACE



## CLAM SHELL

Contains random veins\*

CORIAN® SOLID SURFACE

Visual representation of a corner joint



Large sample representation



AURORA

CORIAN® SOLID SURFACE



WHISPER

Contains large, randomly distributed particles\*

CORIAN® SOLID SURFACE



NEUTRAL CONCRETE

Contains random veins\*

CORIAN® SOLID SURFACE



## NEUTRAL CONCRETE

Contains random veins\*

CORIAN® SOLID SURFACE

— — — — —

Visual representation of a corner joint



Large sample representation





## RAFFIA

Contains large, randomly distributed particles\*

CORIAN® SOLID SURFACE

— — — — —



DOVE

Contains large, randomly distributed particles\*

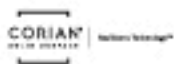
CORIAN®

SOLID SURFACE

—

## COOL GRAY

Contains large, randomly distributed particles\*



## NEUTRAL AGGREGATE

Contains random veins\*

NEW

CORIAN® SOLID SURFACE



## NEUTRAL AGGREGATE

Contains random veins\*

Visual representation of a corner joint



Larger sample representation



## CONCRETE

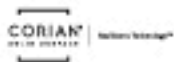
Heavily pigmented. Contains large, randomly distributed particles\*

CORIAN® SOLID SURFACE

— — — — —

## KEYSTONE

Contains large, randomly distributed particles\*



## ASH CONCRETE

Heavily pigmented and veined\*

CORIAN®

SOLID SURFACE





## ASH CONCRETE

Heavily pigmented and veined\*

CORIAN®

SOLID SURFACE

Visual representation of a corner joint



Larger sample representation



## ASH AGGREGATE

Heavily pigmented and veined\*

NEW

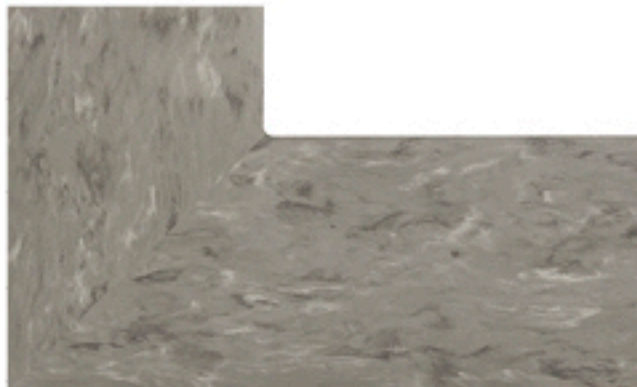
CORIAN® SOLID SURFACE



## ASH AGGREGATE

Heavily pigmented and veined\*

Visual representation of a corner joint



Larger sample representation



## NATURAL GRAY

Heavily pigmented and veined\*

CORIAN® SOLID SURFACE



## NATURAL GRAY

Heavily pigmented and veined\*

CORIAN® SOLID SURFACE

Visual representation of a corner joint



Larger sample representation



## WEATHERED CONCRETE

Heavily pigmented and veined\*

CORIAN® SOLID SURFACE



## WEATHERED CONCRETE

Heavily pigmented and veined\*

CORIAN® SOLID SURFACE

Visual representation of a corner joint



Larger sample representation



## COCOA PRIMA

Heavily pigmented with random veins and reflective pigments\*

NEW

CORIAN® SOLID SURFACE





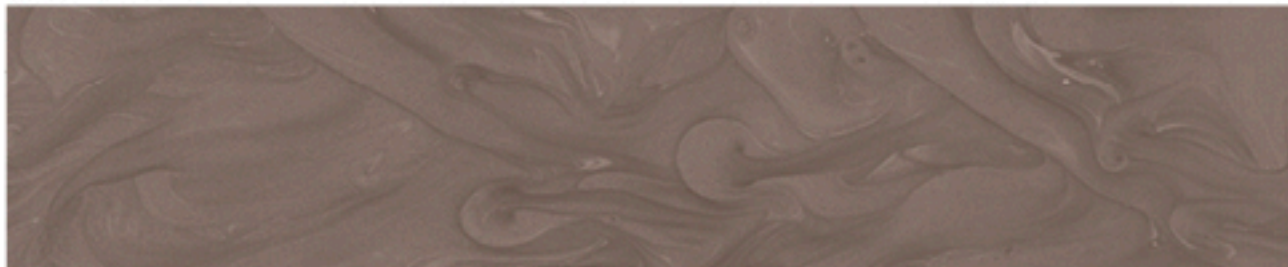
## COCOA PRIMA

Heavily pigmented with random veins and reflective pigments\*

Visual representation of a corner joint



Larger sample representation



NEW

## CARBON AGGREGATE

Heavily pigmented and veined\*

CORIAN® SOLID SURFACE



## CARBON AGGREGATE

Heavily pigmented and veined\*

Visual representation of a corner joint



Larger sample representation



SUEDE

Heavily pigmented. Contains large, randomly distributed particles\*

CORIAN® SOLID SURFACE

www.corian.com



## CARBON CONCRETE

Heavily pigmented and veined\*

CORIAN® SOLID SURFACE



## CARBON CONCRETE

Heavily pigmented and veined\*

CORIAN® SOLID SURFACE

Visual representation of a corner joint



Larger sample representation



DEEP MINK

Heavily pigmented\*

CORIAN® SOLID SURFACE



NEW

## COSMOS PRIMA

Heavily pigmented and veined\*

CORIAN® SOLID SURFACE





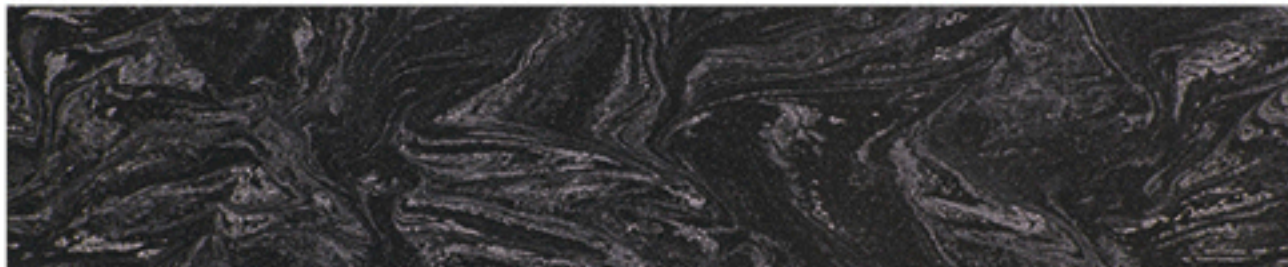
## COSMOS PRIMA

Heavily pigmented and veined\*

Visual representation of a corner joint



Larger sample representation



DEEP NIGHT SKY

CORIAN® SOLID SURFACE



For more information about Corian® Solid Surface, please call:

#### **NORTH AMERICA**

Canada, United States  
Consumers 800 436 7426  
Professionals please contact your distributor  
representatives, or call 800 436 6072 for samples

#### **EUROPE, MIDDLE EAST & AFRICA**

Albania, Bulgaria, Kosovo, Macedonia +359 889 924181  
Austria 0800 29 58 33  
Belgium 0800 96 666  
Croatia, Slovenia, Serbia,  
Bosnia & Herzegovina, Montenegro +386 41 37 00 31  
Cyprus, Greece +30 210 6889700  
Czech Republic, Slovakia +420 257 41 4111  
Egypt, Malta, North Africa +201017379783  
Estonia, Latvia, Lithuania +3706001490  
France 0800 91 72 72  
Germany 0800 18 10 018  
Hungary +36 29 509 400  
Ireland 1800 55 32 52

#### **Italy**

Jordan, Lebanon  
Luxembourg  
Netherlands  
Nordic Countries  
Pakistan  
Poland  
Portugal  
Romania  
Russia, Kazakhstan  
Saudi Arabia, Yemen  
South Africa  
Spain  
Switzerland  
Turkey, Israel, Caucasus Countries,  
North Iraq and North Cyprus  
UAE, Qatar, Bahrain, Kuwait, Oman  
Ukraine, Belorussia, Moldova  
United Kingdom

#### **800 87 67 50**

+971 4 428 5699  
080023 079  
0800 02 23 500  
+46 31 60 73 70  
+92 021 35205477  
+48 22 320 09 00  
+351 22 75 36 900  
+40 31 620 41 00  
+7 495 79 72 200  
+966554734448  
+27 82 797 9078  
901 12 00 89  
0800 55 46 14

#### **+90 212 340 04 00**

+971 50 4521 511  
+38 044 498 90 00  
1EXT. 4106  
0800 96 21 16

#### **ASIA PACIFIC**

Australia 1300 795 044  
China +86 21 38622332  
India 1800-499-0899  
Indonesia +62 21 78 22 555  
Japan +81 3 5410-8551  
Malaysia +603 28590700  
New Zealand 0800 267 426  
Philippines +63-28-189911  
Republic of Korea +82-2-3222-5200  
Singapore +65 6586 3688  
Thailand +66 2 65 94 030  
Vietnam +84 38 24 31 92

#### **LATIN AMERICA**

Argentina 0800 333 87 66  
+54 11 4021 4736  
Brazil 0800 17 17 15  
Chile +56 2 362 2423  
Colombia +57 1-6292202  
Mexico 01 800 849 7514  
+52 55 5722 1150

To know more about Corian® Solid Surface:  
[www.corian.com](http://www.corian.com)

 [Facebook.com/CorianDesign](https://www.facebook.com/CorianDesign)  [Instagram.com/CorianDesign](https://www.instagram.com/CorianDesign)  [Twitter.com/CorianDesign](https://twitter.com/CorianDesign)  [Youtube.com/CorianDesign](https://www.youtube.com/CorianDesign)  [LinkedIn.com/company/corian-design](https://www.linkedin.com/company/corian-design)

Corian®, the Corian® Solid Surface Logo, the Corian® Solid Surface with Resilience Technology™ logo and Resilience Technology™ are registered trademarks or trademarks or copyrighted material of S. I. du Pont de Nemours and Company or its affiliates. Copyright© 2019 S. I. du Pont de Nemours and Company or its affiliates, all rights reserved.

DPS-LA-FF-2019

